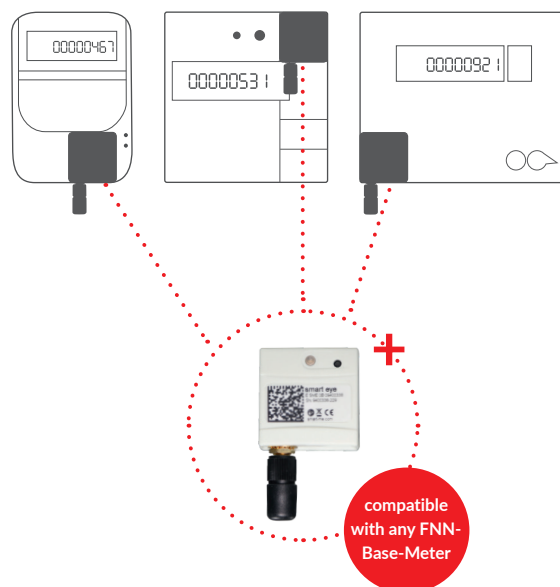


smart-eye – extension to your energy meter with optical interface

The smart-eye integrates energy meters according to the FNN specification sheet (modern measurement equipment) into the smart-me cloud – independent from the manufacturer. The smart-eye is placed on the optical interface and reads out the metering values through an existing WiFi network. It is the easiest way to analyse and optimize the energy consumption in real-time on a smartphone, tablet or computer. Utilities profit from a comprehensive device and user management of all the integrated measuring points.

Funktionen:

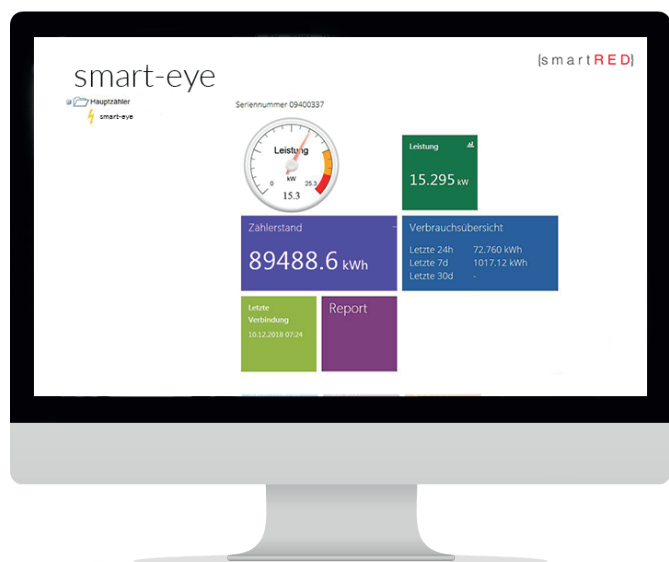
- + Real-time visualization of the metering data (e.g. power, metering values etc.) in the web view and in the app
- + Automated saving of the metering values in the cloud
- + Local logging and automated resynchronization of the metering data in case of connection errors
- + Encrypted WiFi connection directly to the smart-me cloud
- + Extensive energy data management, automated invoicing, energy flow optimizing and alarm configuration in the cloud
- + Easy installation via the free smart-me App for Android and iOS










Operating voltage	USB Type C Interface for 5V	Firmware Update	online
Temperature range	from – 40 to + 70°C	Certifications	CE
Interfaces	WiFi INFO-Interface (communication with meter)	Supported Meters	every meter according to the FNN specification sheet
WiFi standard	802.11 b/g/n	Dimensions	34 x 34 x 25,5 [mm]
WiFi security standard	WEP, WPA, WPA2 (Personal)	Weight	40g
Data storage	2 months	Installation	magnetic

Energie Monitoring Service

The smart-me cloud is the is a modern and easy to use monitoring solution. The consumption data of electricity, heat, gas and water are effortlessly measured and visualized. Moreover, all of the integrated devices are analysed and controlled via the smartphone, the tablet or the computer.



-  Real-time analyses and controlling
-  Extensive reporting
-  Public API
-  Smartphone, Tablet and Computer
-  Various energy types
-  User Management
-  Automated data export i.e. MSCONS

We make any charging station intelligent!

Regardless of the manufacturer – the upgrade with our smart-me Meter brings intelligence to every e-charging station. Management, charging and billing care comfortably handled with the help of our free app-platform. More advanced management functions are available in the web.



eCarUp

One App - all of the functions

- + Register stations
- + Manage integrated stations
- + Find available stations
- + Activate available stations
- + Instant billing of the charging transaction
- + Extensive reporting